

x

RBXSAMURAI

...

- *RBXS is a full-service crypto marketing firm that helps customers with revenue generating coins, gain maximum exposure in the crypto space.*
- *Our team of experts are determined to always work hard in order to enable projects to grow further. We provide marketing solutions including but not limited to; shilling, content creation, copywriting and strategic advice.*

01





INTRODUCTION

We are a Marketing Consultant and Services firm specializing in cryptocurrency. RBXS can handle all of your marketing needs with Macro Shilling, Manual Shilling, Content Creation, Social Media Buildout and community engagement. We can help you achieve a fully integrated department without the large costs and stressors associated with adding new staff to your team. For new launches as well as for well-established coins.

03



ABOUT RBXSAMURAI

x

04 *Our community can Stake their holdings for 4% monthly (48% yearly) payouts on the RBX Dex. By owning and staking, you can share in the rewards as we grow our marketing power. RBXS is currently launched on both Eth and BSC.*



...



We have marketed for over 30 coins, fine-tuning our approach and processes to ensure successful and proven results. We train and develop your community while marketing your token simultaneously to provide continued growth even after our services have ended.

The Hierarchy is a Reward system for active members in Leadership, Content Creation, Shilling and other disciplines deemed useful to RBXS. As you move up the ranks your rewards increase accordingly.



SAMURAI

Marketing Strategies

X



Manual Shilling
Organic Traffic

[Read more](#)



Macro Shilling
Automated Marketing

[Read more](#)

06



Publishing

[Read more](#)



Content Creation

[Read more](#)

Link Tree



@RBXSamurai
\$RBXS (RBXSamurai) cryptocurrency
provides Marketing & Solidity services
linktr.ee

Tokenomics

Long term, healthy sustainable token

- *Each founding Samurai (King/Queen) is loaned, at most, 1% of the total supply to earn staking rewards. These loaned tokens are unable to be sold.*

- *Staking- Starts at 4% monthly / 48% yearly*

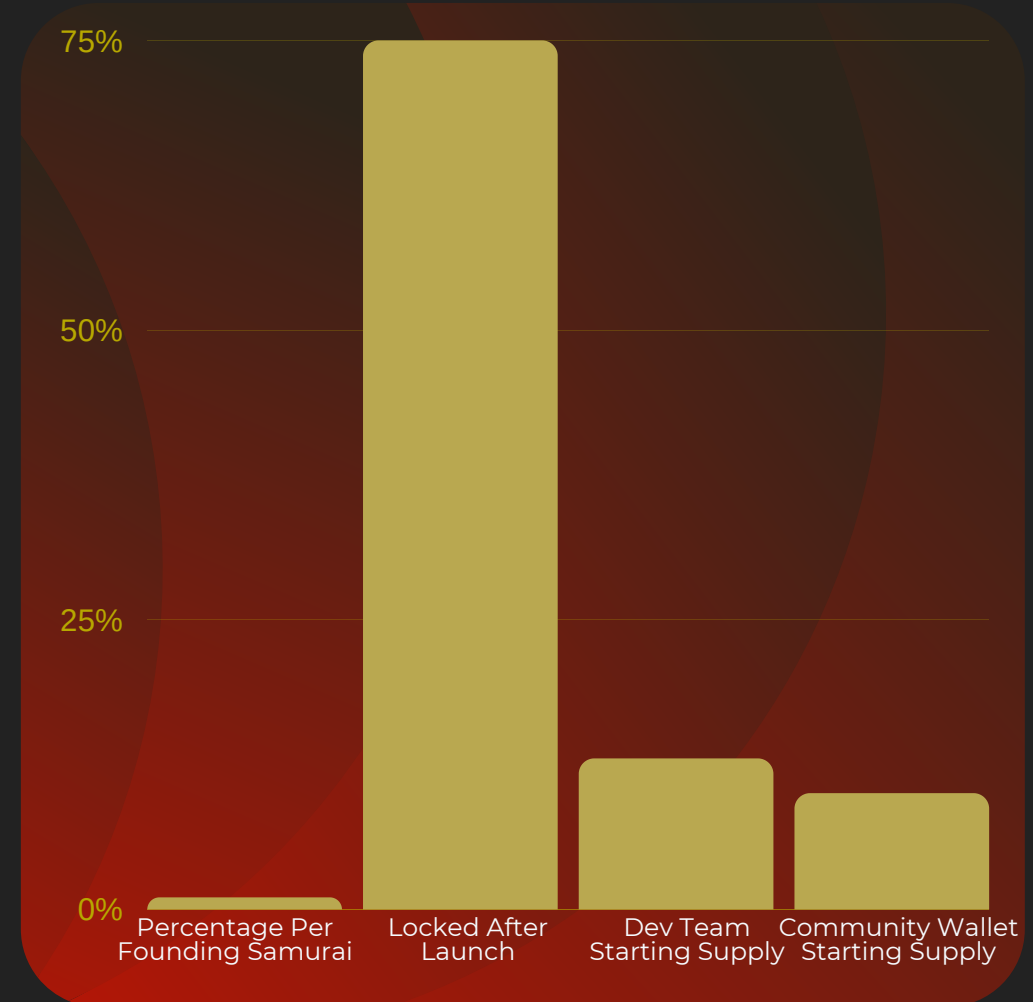
- *Sell Tax- 2.5% on ETH and 5% on BSC to the Community Wallet for buybacks and marketing.*

- *Chains: Can be purchased on Eth or BSC. RBXS is bridged, so there is one coin supply across two chains.*

- *Buybacks will be done through marketing revenue to regularly increase coin price and build supply for staking & team vesting contracts.*



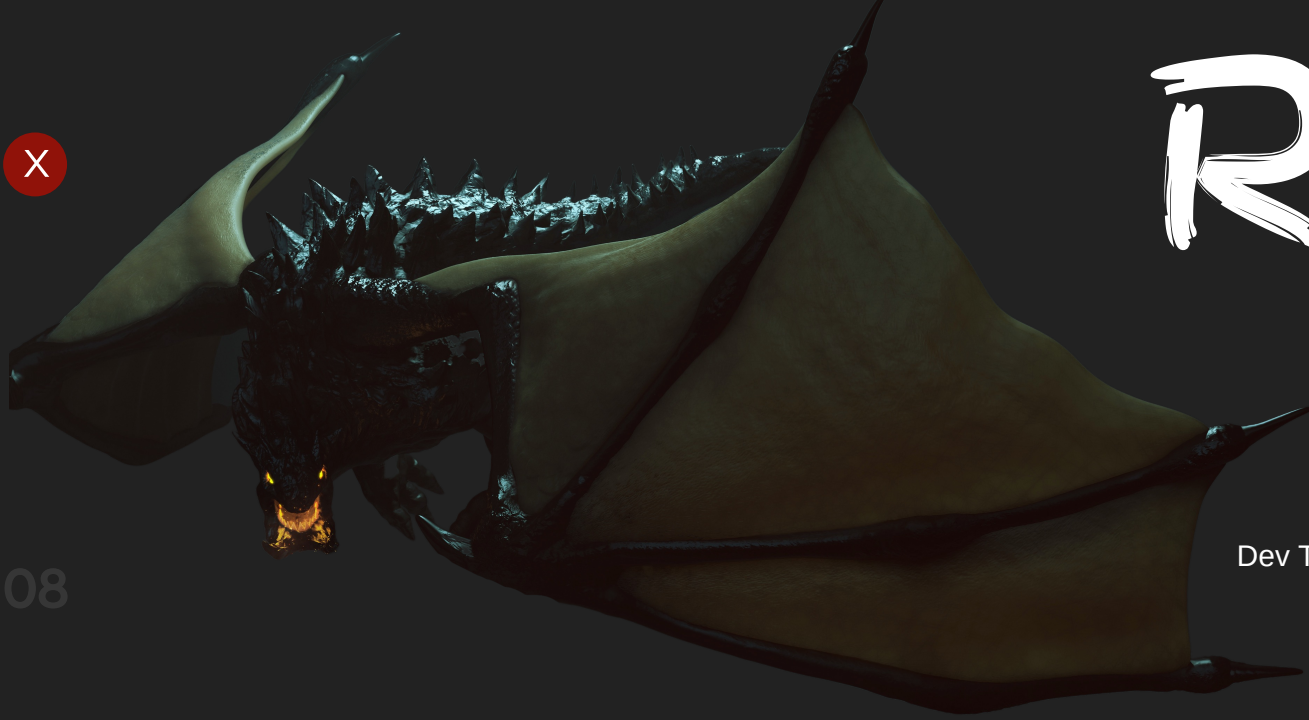
SAMURAI



RBX

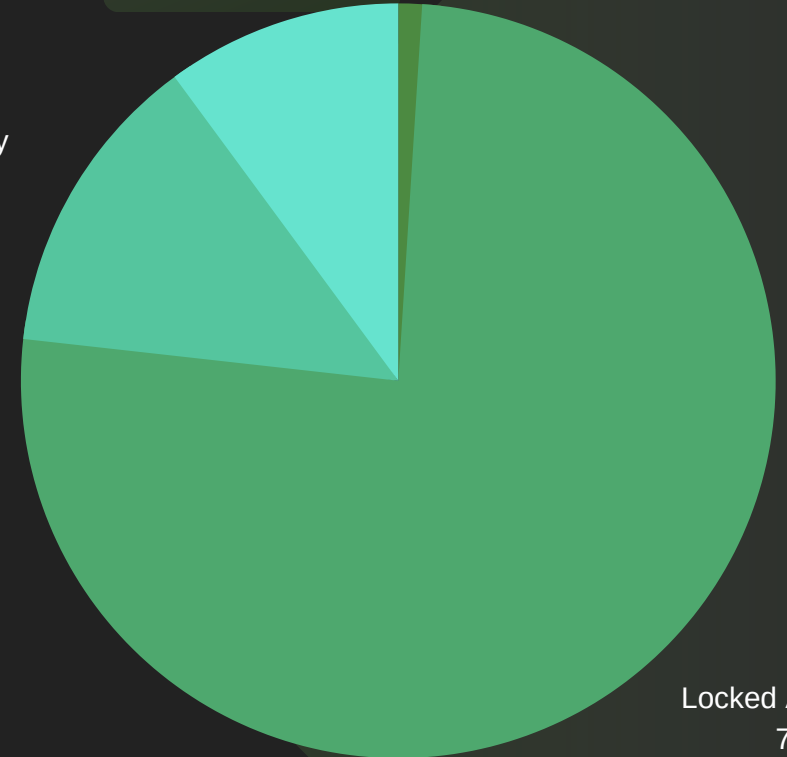


08



Community Wallet
10.1%

Dev Team Supply
13.1%



Locked After Launch
75.8%

- *Max Percentage Per Founding Samurai 1%*
- *Locked after launch 75%*
- *Dev Team Starting Supply 13%*
- *Community Wallet Starting Supply 10%*



Community



We believe a strong community will make an even stronger token. Here at RBXS, anyone in our community can join our ranking system and work themselves up to a King or Queen position. That's what make us unique! We have an RBXS army waiting to work for YOU!

09





Facebook



Instagram



Twitter



TikTok



Telegram



YouTube



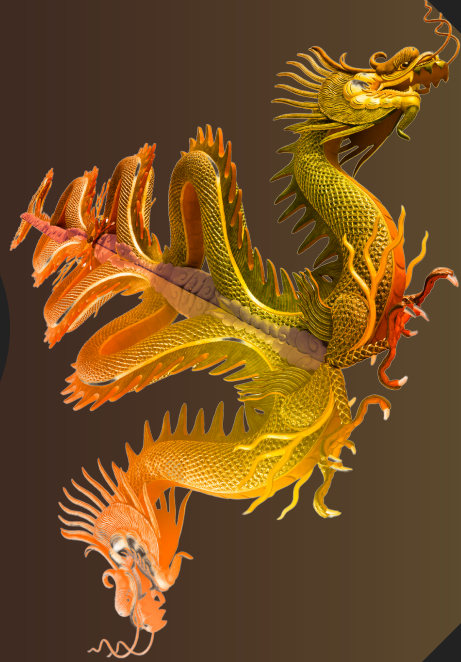
Reddit

Contact US

RBXSAMURAI.COM



Thank You



SAMURAI

Disclaimer: The contents on this page are for informational purposes only and do not constitute financial, accounting, or legal advice.

